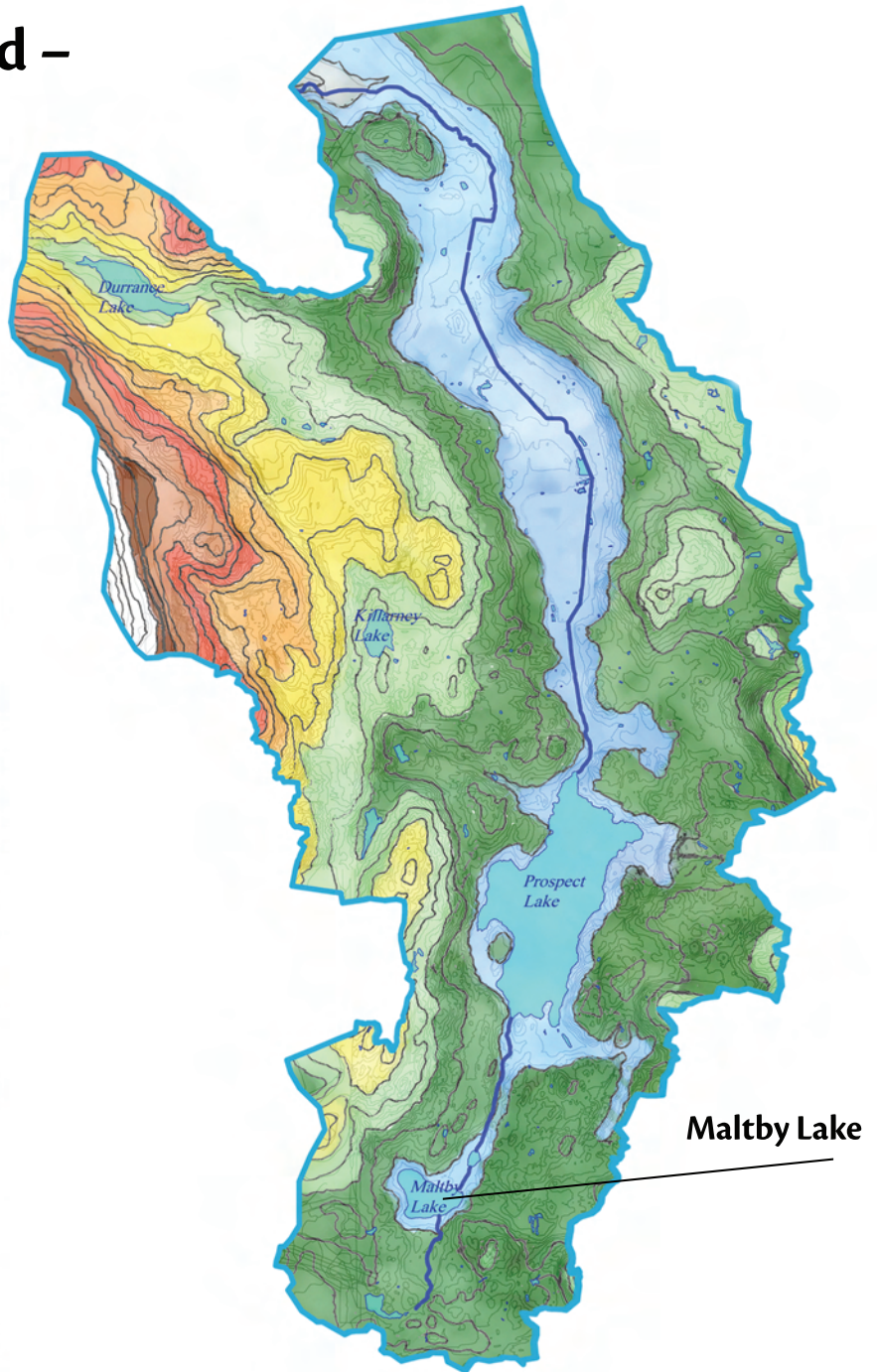
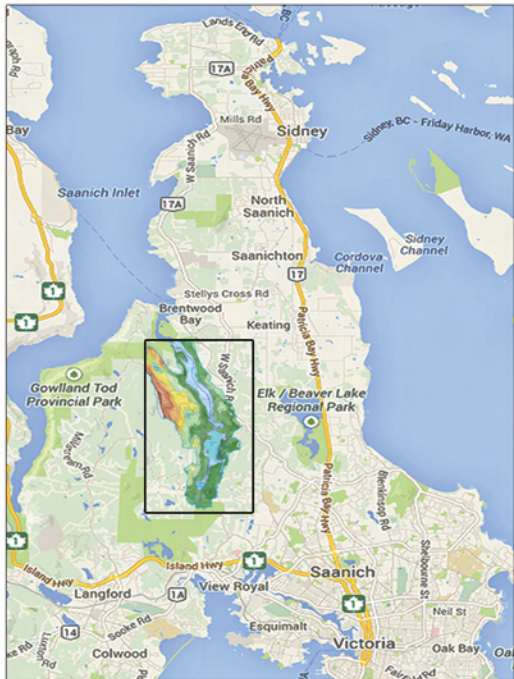


Tod Creek Watershed – Maltby Lake



Maltby Lake	
Location	British Columbia
Coordinates	48°29'47"N 123°27'5"W
Primary inflows	Unnamed Maltby Lake Tributaries
Primary outflows	Little Maltby Lake, Bleathman Creek
Basin countries	Canada
Max. length	400 m (1,300 ft)
Max. width	260 m (850 ft)
Surface area	74,869.9 m ² (805,893 sq ft)
Average depth	4.1 m (13 ft)
Max. depth	8 m (26 ft)
Water volume	292,000 m ³ (10,300,000 cu ft) (on average)
Surface elevation	54 m (177 ft)

MALTBY LAKE IS LOCATED 10 KM NORTH OF VICTORIA IN THE TOD CREEK WATERSHED. THE LAKE IS AN IMPORTANT BODY OF WATER AND IS AT THE HEADWATERS OF THE WATERSHED WHICH EVENTUALLY REACHES TIDE WATER IN TOD INLET NEAR THE BUTCHART GARDENS.

Maltby Lake is a freshwater source in the middle of a semi-rural developing area in Rural Saanich. The near pristine lake and the surrounding area hosts an abundance of wildlife and rare aquatic species such as freshwater jellyfish and sponge, and significant tree species including one of the largest Douglas fir trees in the Capital Regional District.

For almost a century, until 2008, the lake and surrounding lands had been owned by a single extended family which developed the property minimally. The first dwelling, an 1860s hunting cabin, still stands. Motorized watercraft have been banned by the family since the '50s; the lake provides a potable drinking water source for the few residents there.

MALTBY LAKE IS PRIMARILY SPRING FED. IT IS FLANKED BY WETLANDS THAT ARE APPROXIMATELY DOUBLE THE AREA OF THE LAKE ITSELF.

Using the Canadian Wetland Classification System (CWCS 2010), the lake's extensive watershed hosts all 5 major wetland classes: BOG, FEN, SWAMP, MARSH AND SHALLOW WATER. Over 75% of the the Maltby Lake Watershed is wetland and riparian area, and it contributes to the catchment area of Tod Creek which is estimated to be 22.8 km² (8.8 mi²). Maltby Lake, Prospect Lake, Durrance Lake, Killarney Lake and Quarry Lake are all in the Tod Creek drainage area.

Several studies have been conducted on Maltby Lake, including a Camosun College Environmental Study, a PhD on American Bull Frogs and an ongoing study on the hydrology and hydrogeology of the lake.

*Friends of Tod Creek Watershed – <http://todcreek.rd123.ca>
 Habitat Acquisition Trust – <http://www.hat.bc.ca>
 Peninsula Streams Society – <http://peninsulastreams.ca>
 Contour Mapping illustration – Murdoch de Greeff Inc. 2009 (Tod Creek Flats Integrated Management Plan, FTCWS & District of Saanich)*